

KABELSCHLEPP GmbH
 Daimlerstraße 2
 D-57482 Wenden-Gerlingen
 Fon: +49 2762 4003-0
 Fax: +49 2762 4003-220
 E-mail: info@kabelschlepp.de
 kabelschlepp.de

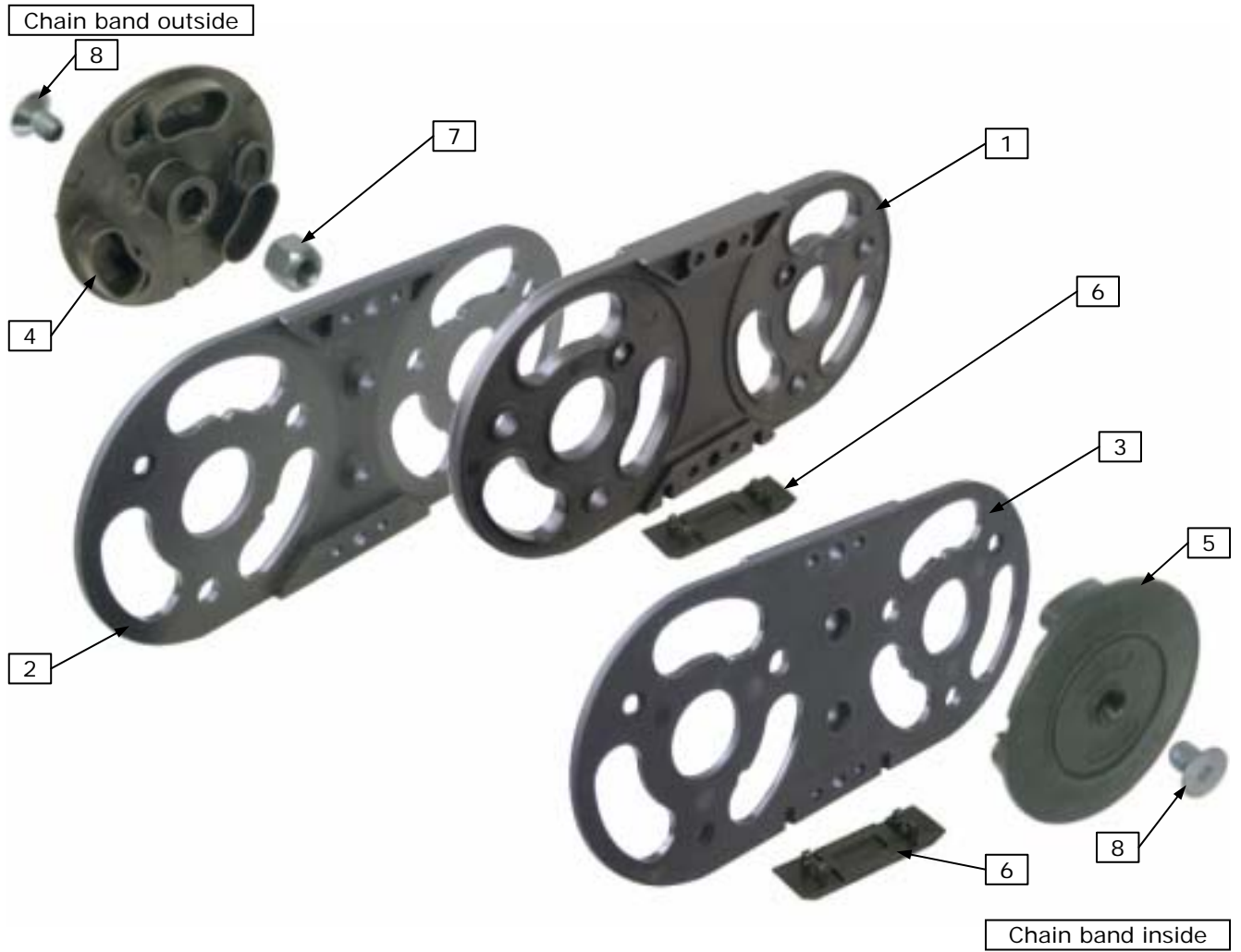
VARIO-LINE

Plastic cable carriers with variable carrier width

XL Series Type XL 1650

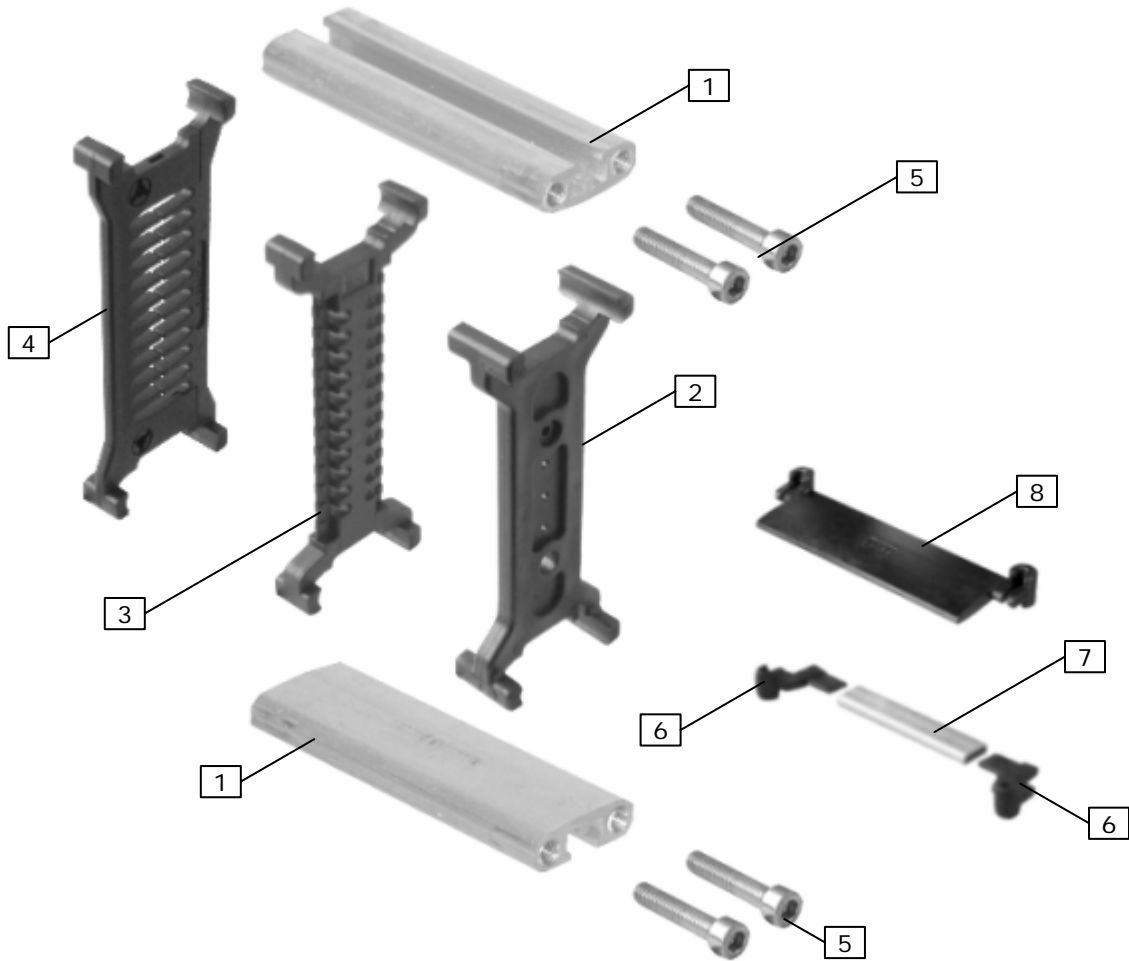
Type	Page
XL 1650 Chain band.....	2
XLC 1650 Stay variant RM	3
XLC 1650 Stay variant RMR	4
XLT 1650 Stay variant RMD	5
Connectors XL 1650.....	6

XL 1650 Chain band



Item	Description / Remarks	Material	Mat. No.
1	Chain plate XL-1650 middle	PA	73000
2	Chain plate XL-1650 inside	PA	73101
3	Chain plate XL-1650 outside	PA	73100
4	Plate 1 / with hole for hexagonal nut item 7		
	KR 250	PA	73200
	KR 300	PA	73210
	KR 350	PA	73220
	KR 400	PA	73230
	KR 450	PA	73240
	KR 500	PA	73250
	KR 550	PA	73260
5	Plate 2 / fixed with screw item 8 at plate 1.		
	KR 250	PA	73300
	KR 300	PA	73310
	KR 350	PA	73320
	KR 400	PA	73330
	KR 450	PA	73340
	KR 500	PA	73350
	KR 550	PA	73360
6	Sliding shoe	PA	73400
7	Hexagonal nut DIN 6330-B M10	St	27103
8	Screw DIN 7991 M10x16	St	21380

Subject to change.



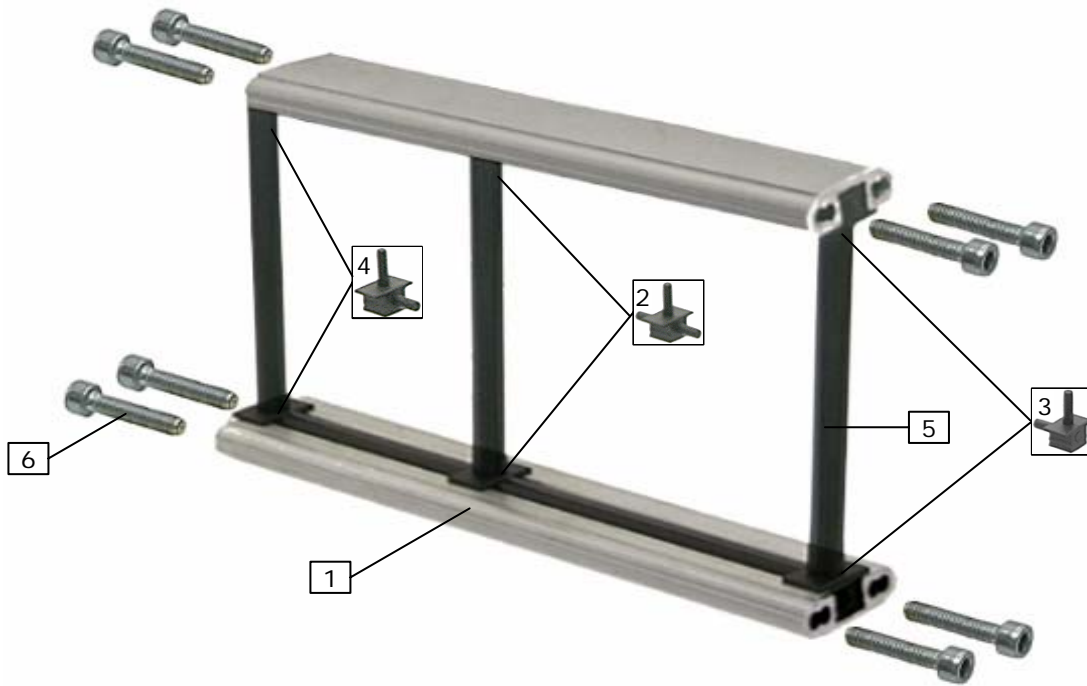
Item	Description / Remarks	Material	Mat. No.
1	Al profile for stay variant „RM“ ¹	Al	5830
2	Divider standard, for TSO, S _T =7,5mm, a _{x,min} =25mm	PA	43810
3	Divider / for height separation with horizontal divider TS3, S _T =8.0mm, a _{x,min} =16mm	PA	71527
4	Twin divider, for height separation with horizontal divider TS3, S _T =5.0mm, a _{x,min} =15mm	PA	71555
5	Cylinder head screw M6x35, galvanized	St	20470
6	Adapter for horizontal divider / with Al hollow profile item 7 and divider item 3 ^{2,3} .	PA	72500
7	Al hollow profile / 11x4, for height separation, max. 3lnm. ¹	Al	5803

Item	Plastic horizontal divider for height separation with divider item 3 ³								
8	center-to-center a_x	16	18	23	28	32	33	38	43
	Material No.	71514	52580	52581	52582	71515	52583	52584	52585
	center-to-center a_x	48	58	64	68	78	80	88	96
	Material No.	71516	52587	71517	52588	52589	71518	52590	71519
	center-to-center a_x	112	128	144	160	176	192	208	–
Material No.	71520	71521	71522	71523	71524	71525	71526	–	

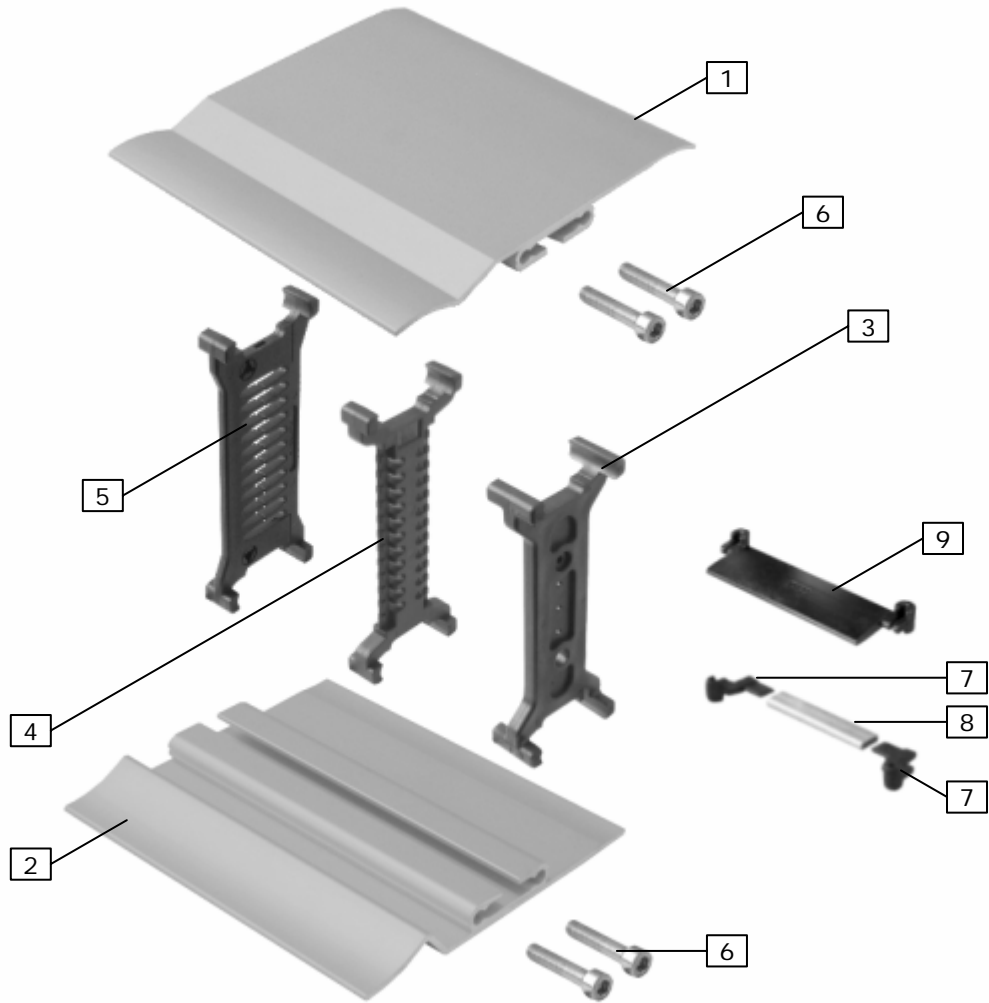
¹ Please indicate length per order.

² L(Al-hollow profile)=a_x-18mm, a_{x,min}=42mm

³ Chamber width=a_x-8mm, thickness=4mm, a_x: center-to-center dividers



Item	Description / Remarks	Material	Mat. No.
1	Al profile for stay variant „RMR“ / please indicate length per order.	Al	5833
2	Adapter for hollow stay item 5 / measure vertical=105mm, measure horizontal min=24 mm/max=114mm, please indicate length per order	PA	72494
3	End adapter left / pins of end adapter must be removed	PA	72494
4	End adapter right / pins of end adapter must be removed	PA	72494
5	Plastic hollow stay / for roller stay, outer diameter 10.0mm, Wall thickness 2.35mm / please indicate length per order	POM	5831
6	Cylinder head screw M6x35, galvanized	St	20470



Item	Description / Remarks	Material	Mat. No.
1	Al profile for stay variant „RMD“ / cover 1 outside ¹ .	Al	5836
2	Al profile for stay variant „RMD“ / cover 2 inside ¹ .	Al	5839
3	Divider Standard / for TSO, S _T =7,5mm, a _{x,min} =25mm	PA	43810
4	Divider / for height separation with horizontal dividers TS3, S _T =8.0mm, a _{x,min} =15mm (without horizontal divider)	PA	71527
5	Twindivider, for height separation with horizontal dividers TS3, S _T =5.0mm, a _{x,min} =15mm	PA	71555
6	Cylinder head screw M6x35, galvanized	St	20470
7	Adapter for horizontal divider / with Al-hollow profile item 8 and divider item 4 ^{2,3}	PA	72500
8	Al hollow profile / 11x4, for height separation, max. 3lnm. ¹	Al	5803

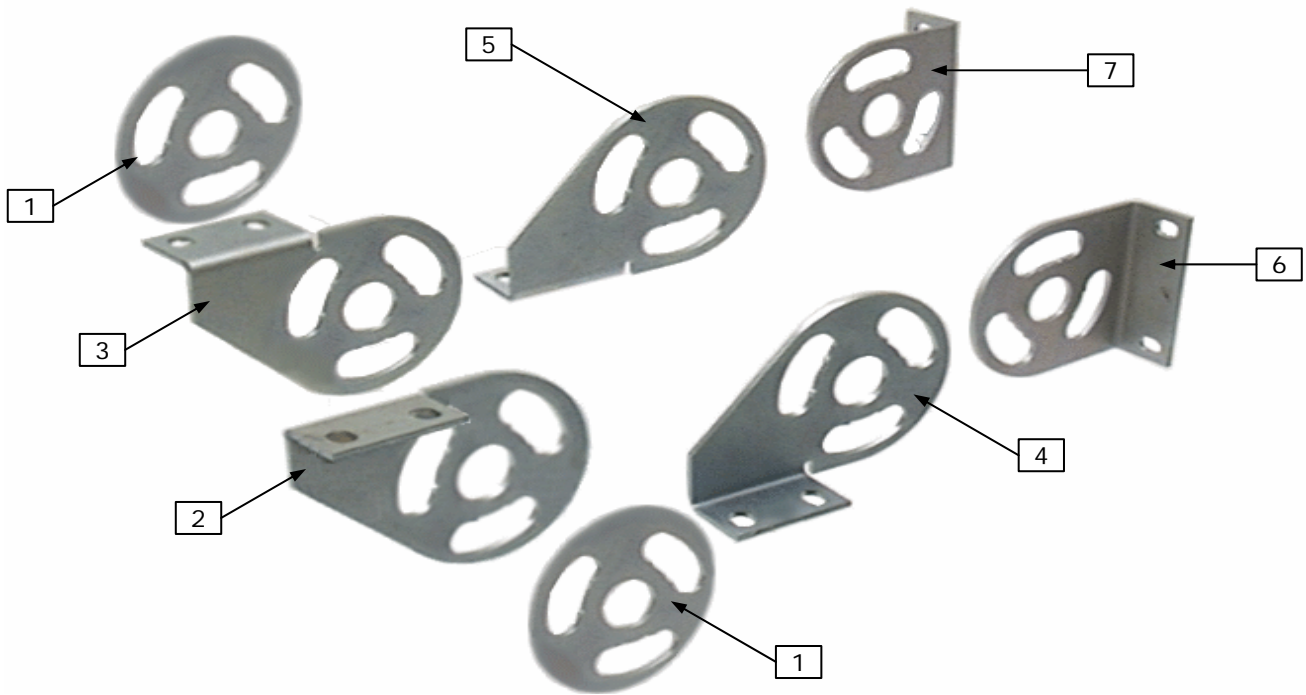
Item	Plastic horizontal divider for height separation with divider item 4 ⁴								
9	center-to-center a_x	16	18	23	28	32	33	38	43
	Material No.	71514	52580	52581	52582	71515	52583	52584	52585
	center-to-center a_x	48	58	64	68	78	80	88	96
	Material No.	71516	52587	71517	52588	52589	71518	52590	71519
	center-to-center a_x	112	128	144	160	176	192	208	–
	Material No.	71520	71521	71522	71523	71524	71525	71526	–

¹ please indicate length per order

² L(Al-hollow profile)=a_x-18mm, a_{x,min}=42mm

³ Chamber width=a_x-8mm, thickness=4mm, a_x: center-to-center dividers

⁴ Chamber width=Width-8mm, Thickness: 4mm



Item	Description / Remarks	Material	Mat. No.
1	Spacer disk (galvanized), used with all connectors.	St	73600
2	End connector left MI / FI (galvanized)	St	73530
3	End connector right MI / FI (galvanized)	St	73520
4	End connector left MA / FA (galvanized)	St	73510
5	End connector right MA / FA (galvanized)	St	73500
6	Front connector links (galvanized)	St	73550
7	Front connector right (galvanized)	St	73540

IDEAS AROUND THE MACHINE

CABLE CARRIER SYSTEMS

Cable carriers made of steel and plastic
QUANTUM cable and hose carrier system
PROTUM cable and hose carrier system
PROFILE cable and hose carrier system
ROBOTRAX cable and hose carrier system

LIFE-LINE Safety Cables

Continuous bending hi-flex cables for cable carrier
TOTALTRAX complete turn-key carrier systems
Pre-assembled cables

KABELSCHLEPP GmbH

Daimlerstraße 2
D-57482 Wenden-Gerlingen
Fon: +49 2762 4003-0
Fax: +49 2762 4003-220
E-mail: info@kabelschlepp.de
kabelschlepp.de

GUIDEWAY PROTECTION SYSTEMS

Telescopic covers
Link apron covers
Way wipes
Conical spring covers
Bellows
Protective devices

CONVEYOR SYSTEMS

Hinged belt conveyors
Scraper conveyors
Belt conveyors

KABELSCHLEPP worldwide

For contacts, addresses and
much more, visit our web side at
kabelschlepp.de