

**KABELSCHLEPP GmbH**

Daimlerstraße 2

D-57482 Wenden-Gerlingen

Fon: +49 2762 4003-0

Fax: +49 2762 4003-220

E-mail: info@kabelschlepp.de

kabelschlepp.de

# STEEL-LINE

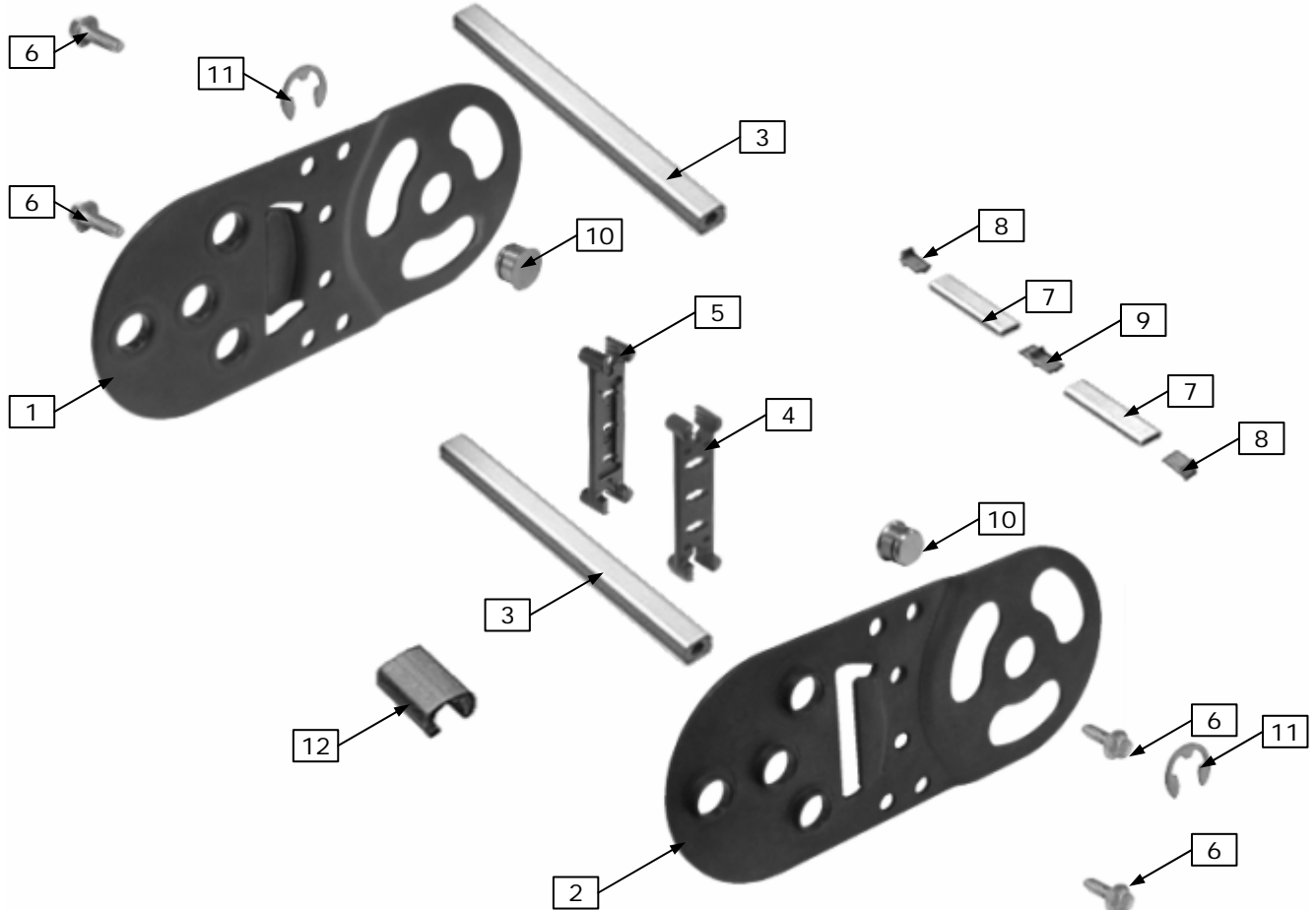
Cable carriers made of Steel

Type LS/LSX 1050

Type	Page
LS/LSX 1050 RS .....	2
LS/LSX 1050 RV .....	3
LS/LSX 1050 RMA.....	5
LS/LSX 1050 RR .....	7
LS/LSX 1050 LG .....	8
Connectors LS/LSX 1050 .....	9

## LS/LSX 1050 RS

Stay variant „RS“: Frame stay



Item	Description	KR 105	KR 125	KR 155	KR 195	KR 260	KR 295	KR 325
1	Chain plate LS 1050 left	44501	44503	44505	44507	44509	44511	44513
2	Chain plate LS 1050 right	44502	44504	44506	44508	44510	44512	44514
no pic.	Chain plate LSX 1050 left <sup>1</sup>	44551	44553	44555	44557	44559	44561	44563
no pic.	Chain plate LSX 1050 right <sup>1</sup>	44552	44554	44556	44558	44560	44562	44564
	<b>Description</b>	<b>KR 365</b>	<b>KR 430</b>	-	-	-	-	-
1	Chain plate LS 1050 left	44515	44517	-	-	-	-	-
2	Chain plate LS 1050 right	44516	44518	-	-	-	-	-
no pic.	Chain plate LSX 1050 left <sup>1</sup>	44565	44567	-	-	-	-	-
no pic.	Chain plate LSX 1050 right <sup>1</sup>	44566	44568	-	-	-	-	-

Item	Description / Remarks	Material number
3	Frame stay profile, L=B <sub>i</sub>	5818
4	Divider / for divider systems TS0 und for TS1, S <sub>T</sub> =4mm	51970
5	Divider / for divider system TS2, S <sub>T</sub> =4mm	51971
6	Spiral form screw M6x16 / thread-forming, LS 1050	21980
	Ratchet screw M6x15 / LS 1050	22160
	Hexagonal screw M6x16 A2 / LSX 1050	19630
	Lock washer D6 A2 / LSX 1050	27430
7	Al-hollow profile/ 11x4, for height separation, max. 3lnm. <sup>2</sup>	5803
8	Insert part single sided/ for divider system TS2 with Al-hollow profile item 7	71250
9	Insert part double sided/ for divider system TS2 with Al-hollow profile item 7	71255
10	LS 1050 countersunk head bolt D12 / for connection chain plates (optional)	44541
	LSX 1050 countersunk head bolt D12 / for connection chain plates (optional)	44591
11	LS 1050 lock washer DIN6799-D10 / with item 10	44542
	LSX 1050 lock washer DIN 6799 -D10/ with item 10	44592
12	Nozzle / plastic, length=33.5mm, to fix the dividers	6036

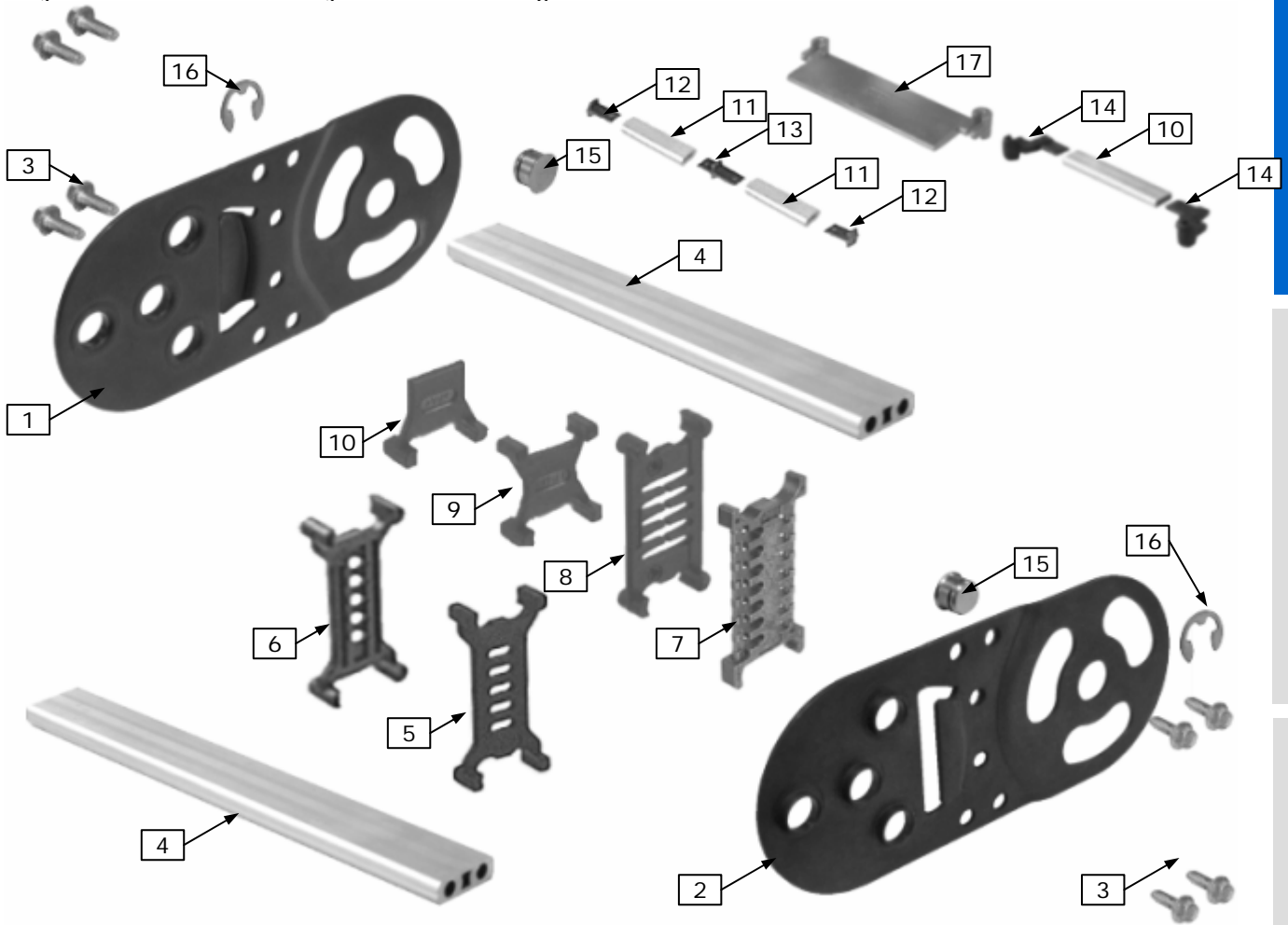
<sup>1</sup> Chain plate made of stainless steel

<sup>2</sup> Please indicate length at order.

## LS/LSX 1050 RV

Stay variant „RV“: frame stay – reinforced design

The power to innovate



Item	Description	KR 105	KR 125	KR 155	KR 195	KR 260	KR 295	KR 325
1	Chain plate LS 1050 left	44501	44503	44505	44507	44509	44511	44513
2	Chain plate LS 1050 right	44502	44504	44506	44508	44510	44512	44514
No pic.	Chain plate LSX 1050 left <sup>1</sup>	44551	44553	44555	44557	44559	44561	44563
no pic.	Chain plate LSX 1050 right <sup>1</sup>	44552	44554	44556	44558	44560	44562	44564
	<b>Description</b>	<b>KR 365</b>	<b>KR 430</b>	-	-	-	-	-
1	Chain plate LS 1050 left	44515	44517	-	-	-	-	-
2	Chain plate LS 1050 right	44516	44518	-	-	-	-	-
no pic.	Chain plate LSX 1050 left <sup>1</sup>	44565	44567	-	-	-	-	-
no pic.	Chain plate LSX 1050 right <sup>1</sup>	44566	44568	-	-	-	-	-

Item	Description / Remarks	Mat. no.
3	Spiral form screw M6x16 / thread-forming, LS 1050	21980
	Ratchet screw M6x15 / LS 1050	22160
	Hexagonal screw M6x16 A2 / LSX 1050	19630
	Lock washer D6 A2 / LSX 1050	27430
4	Frame stay profile, L=B <sub>i</sub>	5800

<sup>1</sup> Chain plate made of stainless steel

## LS/LSX 1050 RV

The power to innovate

Item	Description / Remarks	Mat. no.
5	Divider / for RV, Standard, for TS0 and TS1, $S_T=4\text{mm}$	71301
6	Divider / for RV, for height separation TS2 with Al-hollow profile, $S_T=6\text{mm}$	71300
7	Divider / RV, for height separation with horizontal dividers TS3, $S_T=8\text{mm}$	71512
8	Twin divider / within height separation with horizontal dividers TS3, $S_T=4\text{mm}$	71549
9	Half divider / within height separation with frame stay RV TS4, $S_T=4\text{mm}$	71489
10	Half divider / for height separation with frame stay RV TS4, $S_T=4\text{mm}$	71491
11	Al-hollow profile 11x4mm, max 3lnm. <sup>1</sup>	5803
12	Insert part single sided/ for TS2 with Al-hollow profile 11x4mm	71250
13	Insert part double sided/ for TS2 with Al-hollow profile 11x4mm	71255
14	Adapter for Al-horizontal divider / with Al-hollow profile item 11 and divider item 7 <sup>2, 3</sup>	72500
15	LS 1050 countersunk head bolt D12 / for connection chain plates (optional)	44541
no pic.	LSX 1050 countersunk head bolt D12 / for connection chain plates (optional)	44591
16	LS 1050 lock washer DIN6799-D10 / with item 15	44542
no pic.	LSX 1050 lock washer DIN 6799 -D10 / with item 15	44592

Item	Plastic horizontal divider for height separation with divider item 7 <sup>3</sup>								
17	<b>center-to-center <math>a_x</math></b>	<b>16</b>	<b>18</b>	<b>23</b>	<b>28</b>	<b>32</b>	<b>33</b>	<b>38</b>	<b>43</b>
	Material number	71514	52580	52581	52582	71515	52583	52584	52585
	<b>center-to-center <math>a_x</math></b>	<b>48</b>	<b>58</b>	<b>64</b>	<b>68</b>	<b>78</b>	<b>80</b>	<b>88</b>	<b>96</b>
	Material number	71516	52587	71517	52588	52589	71518	52590	71519
	<b>center-to-center <math>a_x</math></b>	<b>112</b>	<b>128</b>	<b>144</b>	<b>160</b>	<b>176</b>	<b>192</b>	<b>208</b>	–
	Material number	71520	71521	71522	71523	71524	71525	71526	–

Subject to change.

<sup>1</sup> Please indicate length at order

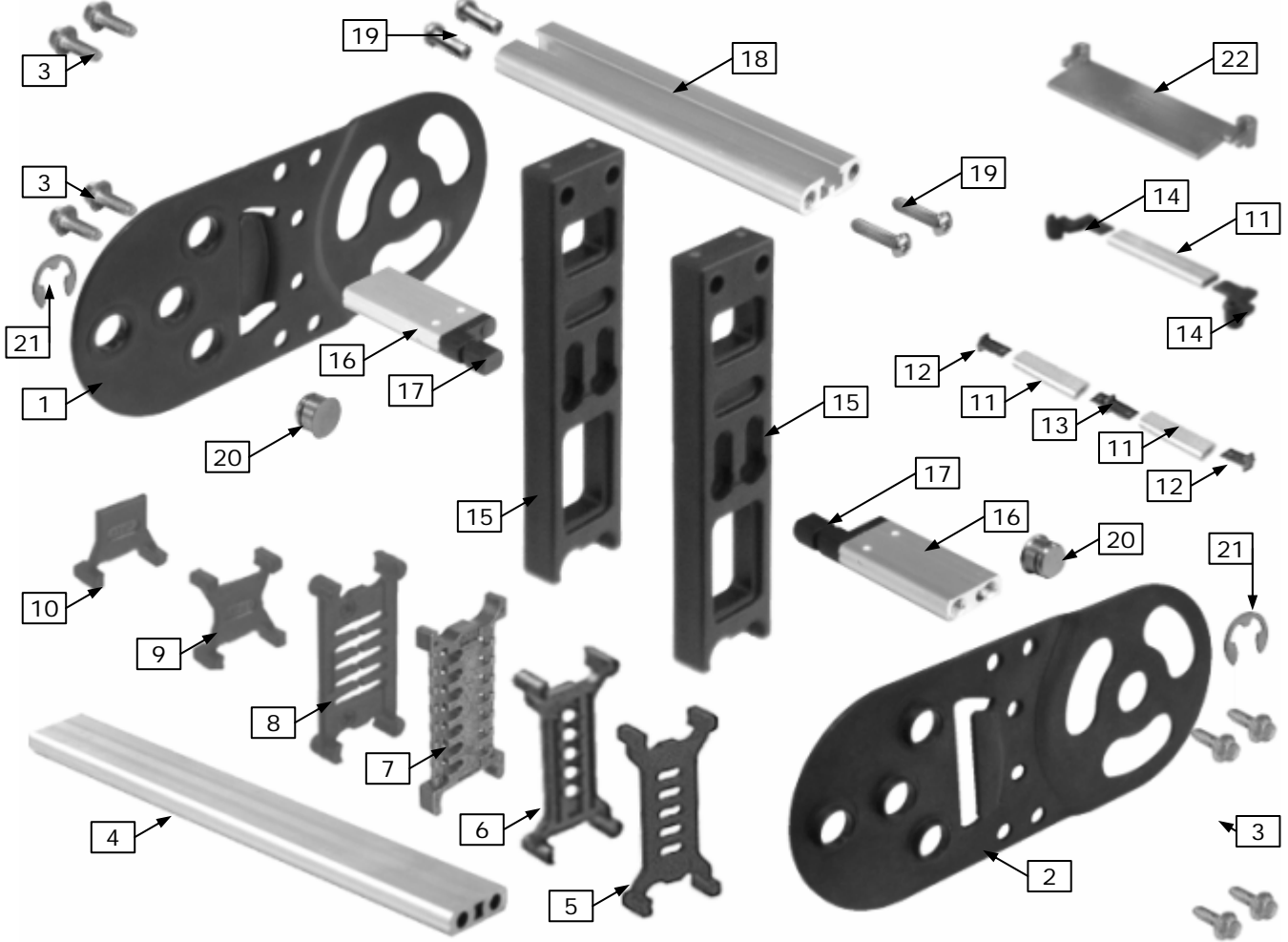
<sup>2</sup>  $L(\text{Al-Hollow profile})=a_x-18\text{mm}$ ,  $a_{x,\text{min}}=42\text{mm}$

<sup>3</sup> Chamber width= $a_x-8\text{mm}$ ,  $a_x$ : center-to-center dividers

## LS/LSX 1050 RMA

Stay variant „RMA“: Mounting frame stay

The power to innovate



Item	Description	KR 105	KR 125	KR 155	KR 195	KR 260	KR 295	KR 325
1	Chain plate LS 1050 left	44501	44503	44505	44507	44509	44511	44513
2	Chain plate LS 1050 right	44502	44504	44506	44508	44510	44512	44514
No pic.	Chain plate LSX 1050 left <sup>1</sup>	44551	44553	44555	44557	44559	44561	44563
no pic.	Chain plate LSX 1050 right <sup>1</sup>	44552	44554	44556	44558	44560	44562	44564
	<b>Description</b>	<b>KR 365</b>	<b>KR 430</b>	-	-	-	-	-
1	Chain plate LS 1050 left	44515	44517	-	-	-	-	-
2	Chain plate LS 1050 right	44516	44518	-	-	-	-	-
no pic.	Chain plate LSX 1050 left <sup>1</sup>	44565	44567	-	-	-	-	-
no pic.	Chain plate LSX 1050 right <sup>1</sup>	44566	44568	-	-	-	-	-

Item	Description / remarks	Mat. -No.
3	Spiral form screw M6x16 / thread-forming, LS 1050	21980
	Ratchet screw M6x15 / LS 1050	22160
	Hexagonal screw M6x16 A2 / LSX 1050	19630
	Lock washer D6 A2 / LSX 1050	27430
4	Frame stay profile, L=B <sub>i</sub>	5800
5	Divider / for RV, Standard, for TS0 and TS1, S <sub>T</sub> =4mm	71301
6	Divider / for RV, for height separation TS2 with Al-hollow profile, S <sub>T</sub> =6mm	71300
7	Divider / RV, for height separation with horizontal dividers TS3, S <sub>T</sub> =8mm	71512
8	Twin divider / within height separation with horizontal dividers TS3, S <sub>T</sub> =4mm	71549
9	Half divider / within height separation with frame stay RV TS4, S <sub>T</sub> =4mm	71489
10	Half divider / for height separation with frame stay RV TS4, S <sub>T</sub> =4mm	71491

<sup>1</sup> Chain plate made of stainless steel

Subject to change.

**LS/LSX 1050 RMA**

The power to innovate

Item	Description / remarks	Mat. -No.
11	Al-hollow profile 11x4mm, max. 3lnm. <sup>1</sup>	5803
12	Insert part single sided/ for height separation TS2 with Al-hollow profile 11x4mm	71250
13	Insert part double sided/ for height separation TS2 with Al-hollow profile 11x4mm	71255
14	Adapter for Al-horizontal divider / with Al-hollow profile item 11 and divider item 7 <sup>2, 3</sup>	72500
15	Mounting frame stay / for variant RMA, S <sub>T</sub> =15mm H <sub>1,2</sub> : 130 mm (> KR 195)	50004
	H <sub>1,2</sub> : 160mm (> KR 260)	50005
	H <sub>1,2</sub> : 200mm (> KR 260)	50006
16	Al-frame stay profile, max. 3lnm. <sup>1</sup>	5813
17	Plastic adapter for profile Pos. 16 / already fixed	72496
18	Frame stay profile RM, max. 3lnm <sup>1</sup>	5823
19	Fillister-head screw M6x25	22225
20	LS 1050 countersunk head bolt D12 / for connection chain plates (optional)	44541
	LSX 1050 countersunk head bolt D12	44591
21	LS 1050 lock washer DIN6799-D10 / with item 20	44542
	LSX 1050 lock washer DIN 6799 -D10	44592

Item	Plastic horizontal divider for height separation with divider item 7 <sup>3</sup>								
22	<b>center-to-center a<sub>x</sub></b>	<b>16</b>	<b>18</b>	<b>23</b>	<b>28</b>	<b>32</b>	<b>33</b>	<b>38</b>	<b>43</b>
	Material number	71514	52580	52581	52582	71515	52583	52584	52585
	<b>center-to-center a<sub>x</sub></b>	<b>48</b>	<b>58</b>	<b>64</b>	<b>68</b>	<b>78</b>	<b>80</b>	<b>88</b>	<b>96</b>
	Material number	71516	52587	71517	52588	52589	71518	52590	71519
	<b>center-to-center a<sub>x</sub></b>	<b>112</b>	<b>128</b>	<b>144</b>	<b>160</b>	<b>176</b>	<b>192</b>	<b>208</b>	–
	Material number	71520	71521	71522	71523	71524	71525	71526	–

Subject to change.

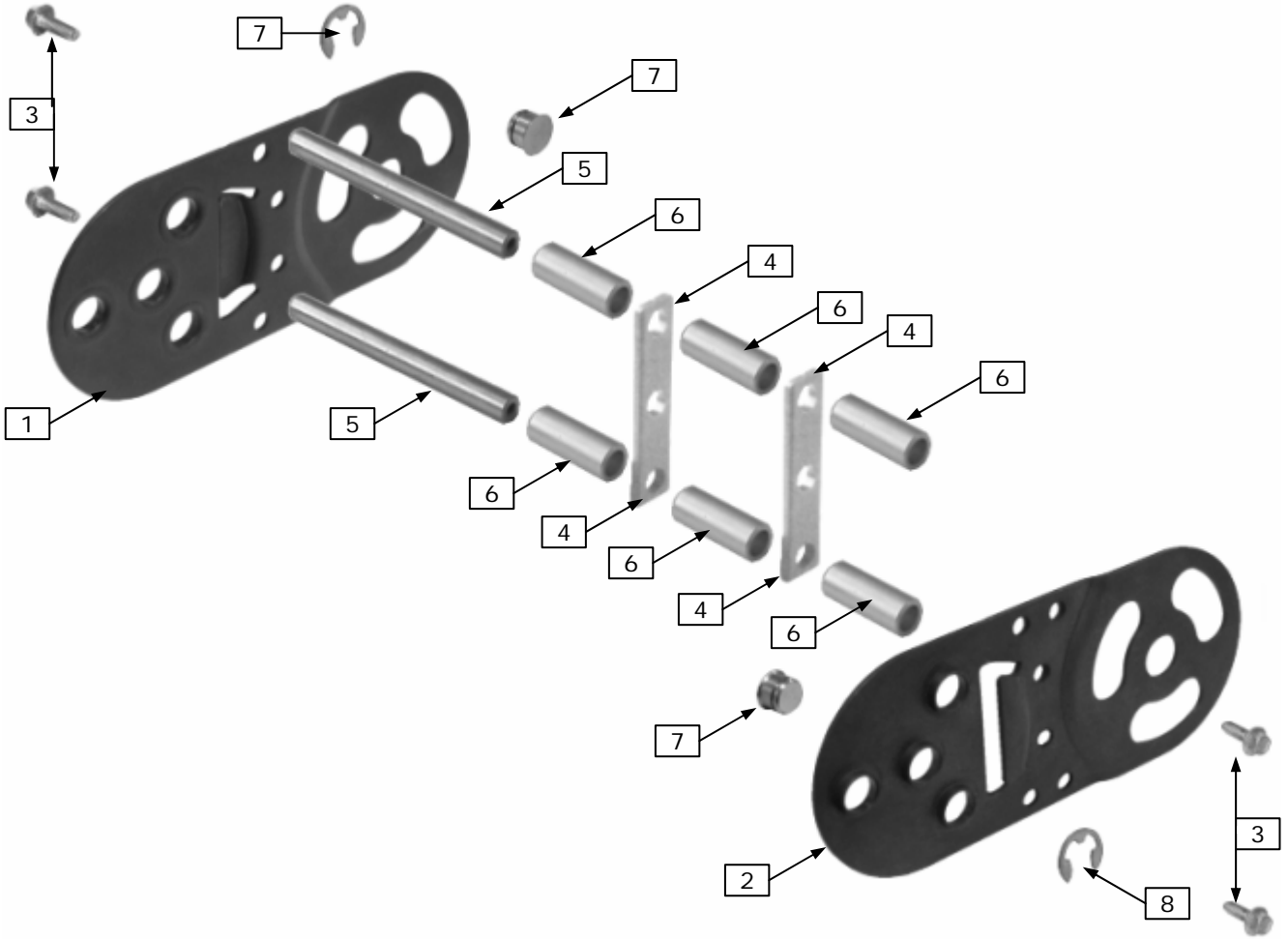
<sup>1</sup> Please indicate length at order

<sup>2</sup> L(Al-Hollow profile)=a<sub>x</sub>-18mm, a<sub>x,min</sub>=42mm

<sup>3</sup> Chamber width=a<sub>x</sub>-8mm, a<sub>x</sub>: center-to-center dividers

## LS/LSX 1050 RR

Stay variant „RR“: frame stay – tube design



Item	Description	KR 105	KR 125	KR 155	KR 195	KR 260	KR 295	KR 325
1	Chain plate LS 1050 left	44501	44503	44505	44507	44509	44511	44513
2	Chain plate LS 1050 right	44502	44504	44506	44508	44510	44512	44514
no pic.	Chain plate LSX 1050 left <sup>1</sup>	44551	44553	44555	44557	44559	44561	44563
no pic.	Chain plate LSX 1050 right <sup>1</sup>	44552	44554	44556	44558	44560	44562	44564
	<b>Description</b>	<b>KR 365</b>	<b>KR 430</b>	-	-	-	-	-
1	Chain plate LS 1050 left	44515	44517	-	-	-	-	-
2	Chain plate LS 1050 right	44516	44518	-	-	-	-	-
no pic.	Chain plate LSX 1050 left <sup>1</sup>	44565	44567	-	-	-	-	-
no pic.	Chain plate LSX 1050 right <sup>1</sup>	44566	44568	-	-	-	-	-

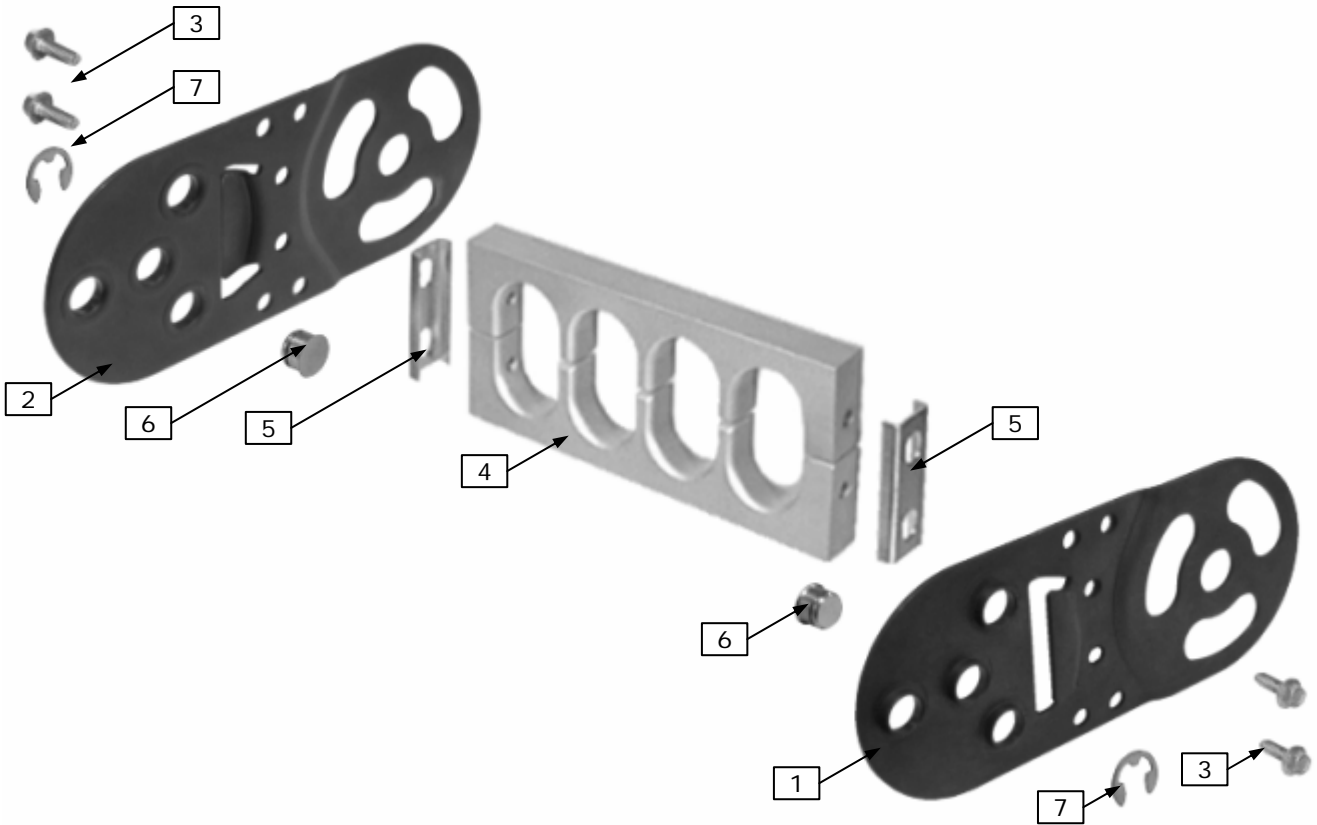
Item	Description / Remarks	Material no.
3	Ratchet screw M6x15 / LS 1050	22160
	Hexagonal screw M6x16 A2 / LSX 1050	19630
	Lock washer D6 A2 / LSX 1050	27430
4	Divider tube stay	- <sup>2</sup>
5	Axle D8 / please indicated length at order, L=B <sub>1</sub>	- <sup>2</sup>
6	Tube D12 / please indicated length at order	- <sup>2</sup>
7	LS 1050 countersunk head bolt D12 / for connection chain plates (optional)	44541
	LSX 1050 countersunk head bolt D12 / for connection chain plates (optional)	44591
8	LS 1050 lock washer DIN6799-D10 / with item 7	44542
	LSX 1050 lock washer DIN 6799 -D10 / with item 7	44592

<sup>1</sup> Chain plate made of stainless steel

<sup>2</sup> not at stock

## LS/LSX 1050 LG

Stay variant „LG“: hole stay



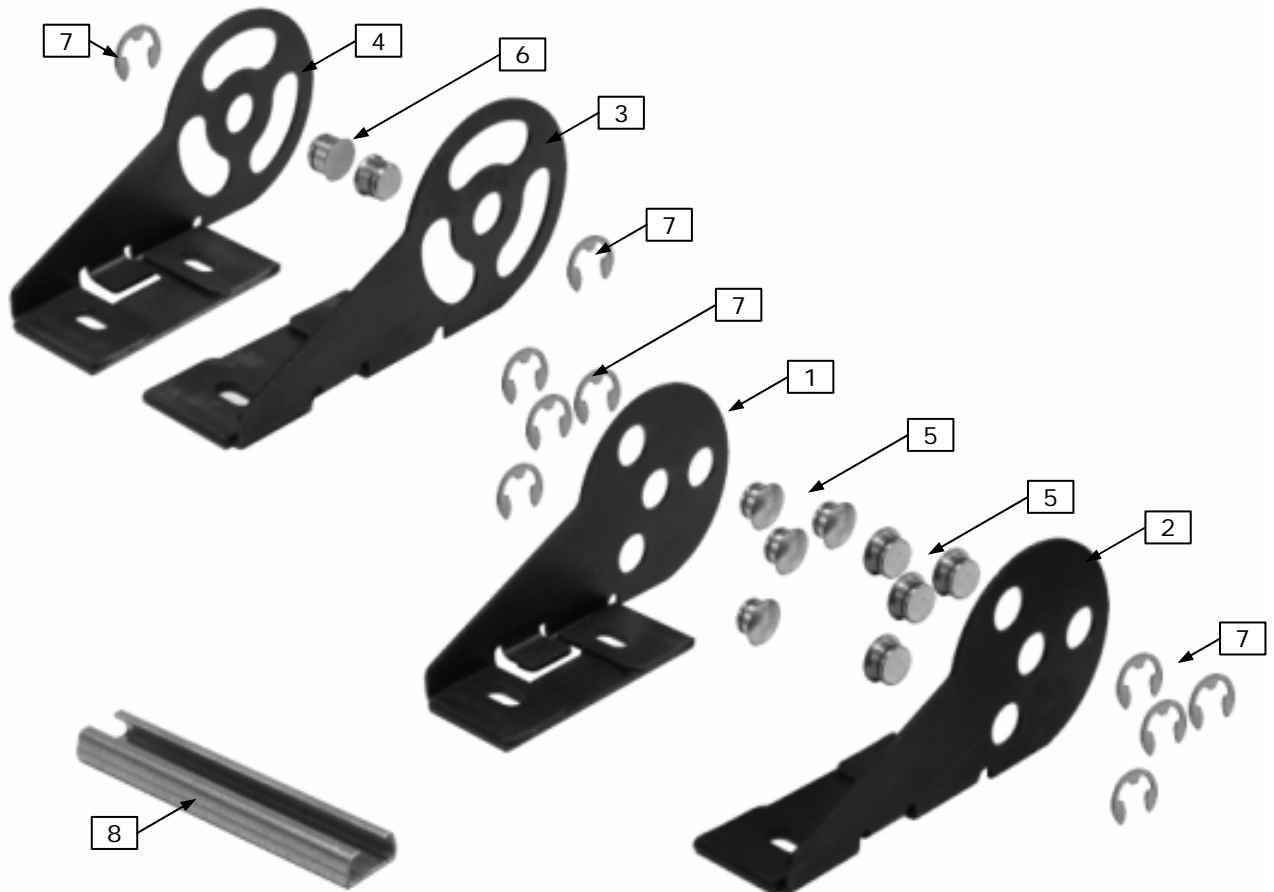
Item	Description	KR 105	KR 125	KR 155	KR 195	KR 260	KR 295	KR 325
1	Chain plate LS 1050 left	44501	44503	44505	44507	44509	44511	44513
2	Chain plate LS 1050 right	44502	44504	44506	44508	44510	44512	44514
no pic.	Chain plate LSX 1050 left <sup>1</sup>	44551	44553	44555	44557	44559	44561	44563
no pic.	Chain plate LSX 1050 right <sup>1</sup>	44552	44554	44556	44558	44560	44562	44564
	<b>Description</b>	<b>KR 365</b>	<b>KR 430</b>	-	-	-	-	-
1	Chain plate LS 1050 left	44515	44517	-	-	-	-	-
2	Chain plate LS 1050 right	44516	44518	-	-	-	-	-
no pic.	Chain plate LSX 1050 left <sup>1</sup>	44565	44567	-	-	-	-	-
no pic.	Chain plate LSX 1050 right <sup>1</sup>	44566	44568	-	-	-	-	-

Item	Description / Remarks	Material no.
3	Spiral form screw M6x16 / thread-forming, LS 1050	21980
	Ratchet screw M6x15 / LS 1050	22160
	Hexagonal screw M6x16 A2 / LSX 1050	19630
	Lock washer D6 A2 / LSX 1050	27430
4	Flat profile 15x34mm / for split hole stay, L=B <sub>f</sub> +28mm	5270
No pic.	Flat profile 15x68mm / for unsplit hole stay, L=B <sub>f</sub> +28mm	5320
5	Clamp / for assembly of hole stays	36060
6	LS 1050 countersunk head bolt D12 / for connection chain plates (optional)	44541
	LSX 1050 countersunk head bolt D12	44591
7	LS 1050 lock washer DIN6799-D10 / with item 6	44542
	LSX 1050 lock washer DIN 6799 -D10	44592

<sup>1</sup> Chain plate made of stainless steel

## Connectors LS/LSX 1050

The power to innovate



Item	Description / Remarks	Mat. -No.
1	End connector LS 1050 FA left	44530
2	End connector LS 1050 FA right	44531
3	End connector LS 1050 MA left	44532
4	End connector LS 1050 MA right	44533
no pic.	End connector LS 1050 MI left	44534
no pic.	End connector LS 1050 MI right	44535
5	LS 1050 Lens head bolt D15 / to attach fixed point, FA, 4 pcs. per end connector	44540
6	LS 1050 countersunk head bolt D12 / to attach driver, MA/MI, 1 pcs. per end connector	44541
7	LS 1050 lock washer DIN6799-D10	44542
no pic.	End connector LSX 1050 FA left	44580
no pic.	End connector LSX 1050 FA right	44581
no pic.	End connector LSX 1050 MA left	44582
no pic.	End connector LSX 1050 MA right	44583
no pic.	End connector LSX 1050 MI left	44584
no pic.	End connector LSX 1050 MI right	44585
no pic.	LSX 1050 Lens head bolt D15	44590
no pic.	LSX 1050 countersunk head bolt D12	44591
no pic.	LSX 1050 lock washer DIN 6799 -D10	44592
8	C-profile 25x12/ L=B <sub>i</sub> (FA), L=B <sub>i</sub> +4mm (MI)	3934

### Remarks:

- Optionally the countersunk head pin #44541 with the lock washer #44542 can be used as central bolt for connection the chain plates.

Subject to change.

## IDEAS AROUND THE MACHINE

### **CABLE CARRIER SYSTEMS**

Cable carriers made of steel and plastic  
QUANTUM cable and hose carrier system  
PROTUM cable and hose carrier system  
PROFILE cable and hose carrier system  
ROBOTRAX cable and hose carrier system

### **LIFE-LINE Safety Cables**

Continuous bending hi-flex cables for cable carrier  
TOTALTRAX complete turn-key carrier systems  
Pre-assembled cables

### **KABELSCHLEPP GmbH**

Daimlerstraße 2  
D-57482 Wenden-Gerlingen  
Fon: +49 2762 4003-0  
Fax: +49 2762 4003-220  
E-mail: [info@kabelschlepp.de](mailto:info@kabelschlepp.de)  
[kabelschlepp.de](http://kabelschlepp.de)

### **GUIDEWAY PROTECTION SYSTEMS**

Telescopic covers  
Link apron covers  
Way wipes  
Conical spring covers  
Bellows  
Protective devices

### **CONVEYOR SYSTEMS**

Hinged belt conveyors  
Scraper conveyors  
Belt conveyors

### **KABELSCHLEPP worldwide**

For contacts, addresses and  
much more, visit our web side at  
[kabelschlepp.de](http://kabelschlepp.de)